

Cleaning Guidance for Student Housing in Response to COVID-19

Revised: March 19, 2022

PURPOSE

This guidance provides recommendations on cleaning and disinfecting Student Housing areas running under normal operations, consolidated space, and quarantine/isolation spaces occupied by individuals with suspected/confirmed COVID-19 infection. It is aimed at limiting transmission of COVID-19 in key environments. These recommendations will be updated as additional information becomes available.

DEFINITIONS:

- **Cleaning** refers to the removal of dirt and impurities, including viruses, from surfaces. Cleaning alone does not kill viruses. But by removing the viruses, it decreases their number and therefore any risk of spreading infection.
- **Disinfecting** works by using chemicals, for example EPA-registered disinfectants, to kill viruses on surfaces. This process does not necessarily clean dirt off the surface but kills viruses that are present on the surface.
- **Contact Time** is the time a disinfectant is in direct contact with the surface or item to be disinfected. For surface disinfection, this period is framed by the application to the surface and leaving the disinfectant on the surface for the required contact time. Disinfectants have varying amounts of contact time.
- **Quarantine** separates and restricts the movement of people who were exposed to a contagious disease to see if they become sick. Individuals identified for quarantine include those who have been exposed to the virus and are awaiting COVID-19 test results. A person may have been exposed to the virus without knowing it (for example, when traveling or out in the community), or they could have the virus without feeling symptoms. Quarantine helps limit further spread of COVID-19.
- **Quarantine or Isolation Spaces** refers to areas in Student Housing identified as quarantine/isolation spaces. Per advisement from Student Health Center and Orange County Health Care Agency, room assignments should have one resident per bedroom and one resident per bathroom.
- **PUI** is the abbreviated term for Person Under Investigation and is yet to be confirmed via testing whether the person is positive for the disease or not.
- **Consolidated Spaces** refers to the areas in Student Housing that have consolidated UCI affiliated residents into contiguous buildings. Per advisement from Student Health Center and Orange County Health Care Agency, room assignments should have one resident per bedroom with no more than four residents per bathroom.
- **Isolation** refers to the separation of sick people with a contagious disease from people who are not sick. Individuals identified for isolation include those who have received positive test results for COVID-19.

GENERAL RECOMMENDATIONS

The following recommendations apply to all common areas, with the exception of areas visited by a suspected or positive COVID-19 case in Student Housing facilities.

If Student Housing employees are ill or not feeling well, they should not come into work and notify their supervisor immediately.

EH&S strongly discourages employees from entering any quarantine/isolation rooms if/when it is occupied.

Prior and immediately before entering all spaces, employees should:

Put on the following PPE prior to entering:

- Face coverings (avoid touching face) (strongly recommended for indoor spaces)
- Slip resistant shoes and/or safety glasses or goggles (if applicable)
- Disposable gloves
- Follow Aerosol Transmissible Disease Exposure Control Plan for UCI Student Housing Areas, where applicable

Cleaning

EH&S recommends that employees follow normal cleaning procedures **AND** follow the manufacturer's instructions for all cleaning and disinfection products to ensure safe and effective use of the product. The label will include safety information and application instructions. Many products recommend keeping the surface wet with a disinfectant for a certain period (see "contact time" on the product label).

- Check the product label to see what PPE (such as gloves, glasses, or goggles) is required based on potential hazards.
- Ensure adequate ventilation (for example, open windows).
- Use only the amount recommended on the label.
- If diluting with water is indicated for use, use water at room temperature (unless stated otherwise on the label).
- Label diluted cleaning or disinfectant solutions.

Frequently touched surfaces should be cleaned at least once a day and as needed. Frequently touched surfaces include:

- | | | |
|------------------|--------------------|---------------------------------|
| - Tables | - Cashier stations | - Refrigerators/freezer handles |
| - Doorknobs | - Phones | - Breakrooms |
| - Light switches | - Keyboards | - Drinking fountains |
| - Countertops | - Toilets | -Desks |
| | | -Toilets |
| - Handles | - Faucets/sinks | |

Cleaning frequencies for all other low commonly used surfaces such as high windows, hard-to-reach places, etc. may stay the same/increase/decrease under the discretion of Student Housing supervisors and managers as long as these changes do not place employees at risk of potential exposure.

Disinfecting

Student Housing employees should follow normal disinfecting procedures and disinfect **frequently touched surfaces** at least once a day, and as needed. Commonly touched surfaces include those areas as listed above.

EH&S recommends disinfecting towels and cleaning equipment after each use using EPA-

approved disinfectants for use against COVID-19:

<https://www.epa.gov/pesticide-registration/list-n-disinfectants-use-against-sars-cov-2>.

Laundering

Student Housing uniforms should be laundered after every shift, under normal operations.

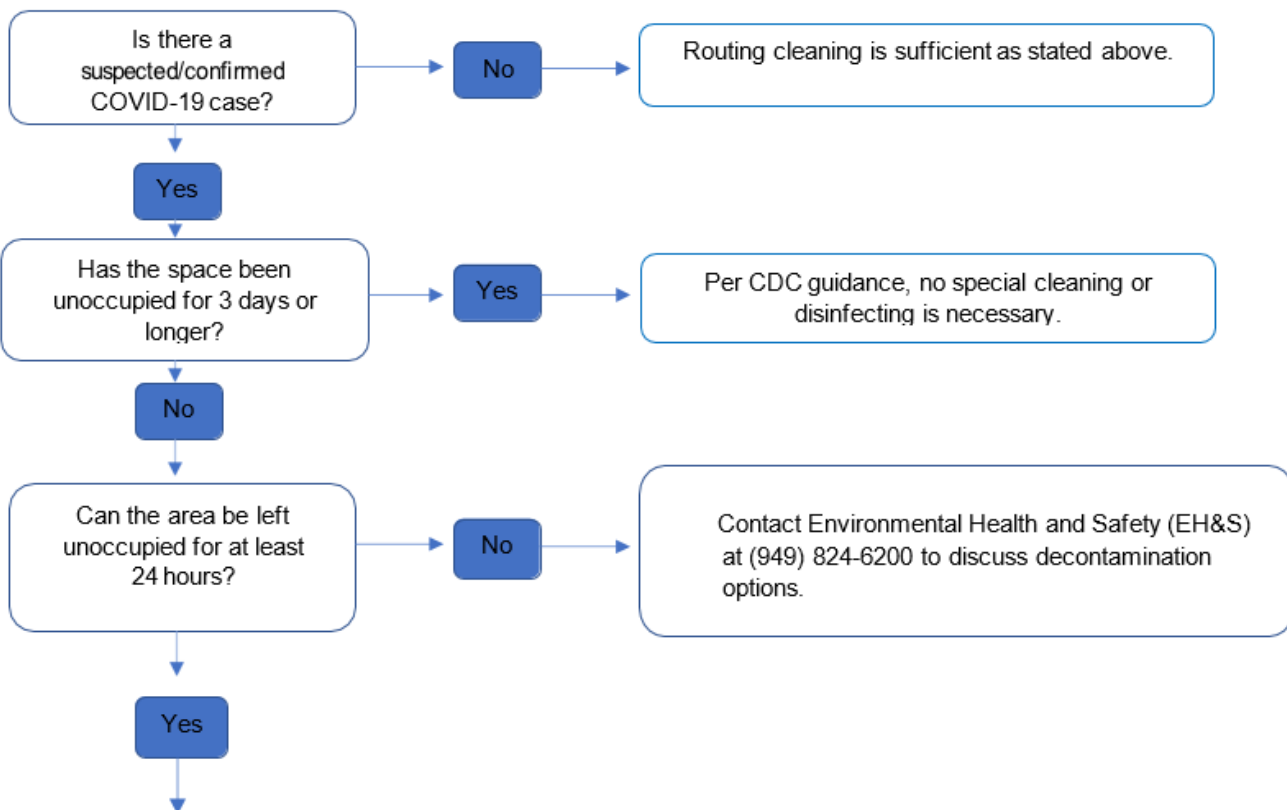
Trash Removal

Employees should follow normal trash disposal procedures.

Immediately after completing cleaning and disinfecting, employees should:

1. Sanitize and disinfect towels (or dispose of them) and equipment after use.
2. Remove PPE and place disposable PPE in trash bag after leaving space.
3. Trash bag can be disposed of in regular trash.
4. Immediately wash hands with soap and water for 20 seconds or use alcohol-based hand sanitizer that contains at least 60% alcohol.

Cleaning and Disinfecting Flowchart for Suspected/Confirmed COVID-19 Cases:



After 24 hours has passed, proceed with cleaning and disinfecting the space using EPA-approved disinfectants and wearing the appropriate PPE. These spaces can be cleaned and sanitized similar to common areas.

COVID-19 Resources:

[UCI website](#), [UCI EH&S](#), [CDC website](#), [OC Health Care Agency website](#)

UCI EMPLOYEE REQUIREMENTS

Employees working in these spaces should have relevant experience in performing the job. Supervisors should provide experienced employees to assist new employees or work with the supervisor prior to starting job duties.

The following safety training is required for these employees. Contact EH&S for assistance.

- Safety Fundamentals training – available online at UC Learning Center
- Hazardous Communication training – available online at UC Learning Center
- Aerosol Transmissible Diseases (ATD) training* – available online at UC Learning Center

*Aerosol Transmissible Diseases (ATD) training is only required for employees cleaning and disinfecting areas where a person or employee with suspected/confirmed COVID-19 visited or used the space.

Areas Visited by Person(s) with Suspected/Confirmed COVID-19

The following procedures apply to:

- Quarantine/isolation rooms
- Common areas in quarantine/isolation spaces, including:
 - Elevators, lobbies, corridors, and stair ways, primarily those with high foot-traffic
 - Laundry rooms, kitchens, and bathrooms – Keeping a space vacant for 24 hours is not required, but it is recommended to keep vacant for as long as possible.
 - Other areas with frequently touched surfaces (i.e. doorknobs, windows, etc.)

If there has been a sick person or someone who tested positive for COVID-19 in Student Housing facilities within the last 24 hours, spaces should be cleaned and disinfected:

- Close off and barricade the space
- Open outside doors and windows and use ventilating fans to increase air circulation in the area.
- Wait 24 hours or as long as it is practical before beginning cleaning and disinfection.

If it has been more than 3 days since the person with suspected/confirmed COVID-19 visited the space, additional disinfection is not necessary: [Cleaning and Disinfecting Your Facility | CDC](#)

Before cleaning and disinfecting

- Close off areas used by the person who is sick and do not use those areas until after cleaning and disinfecting.
- Wait as long as possible (at least several hours) before you clean and disinfect.

While cleaning and disinfecting

- Use products from EPA List N according to the instructions on the product label.
- [Wear a mask](#) (strongly recommended for indoor spaces) and while cleaning and disinfecting.
- Focus on the immediate areas occupied by the person who is sick or diagnosed with COVID-19.
- [Vacuum the space if needed](#). Use a vacuum equipped with high-efficiency particulate air (HEPA) filter and bags, if available.
- Ensure safe and correct use and storage of cleaning and disinfectant products, including storing such products securely and using PPE needed for the cleaning and disinfection products.

If less than 24 hours have passed since the person who is sick or diagnosed with COVID-19 has been in the space, clean and disinfect the space.

If more than 24 hours have passed since the person who is sick or diagnosed with COVID-19 has been in the space, cleaning is enough.

If more than 3 days have passed since the person who is sick or diagnosed with COVID-19 has been in the space, no additional cleaning (beyond regular cleaning practices) is needed.

In addition to the procedures listed above, employees should follow the [Centers for Disease Control](#) guidelines for disinfecting surfaces:

When disinfecting **hard (non-porous)** surfaces, employees should:

1. Wear required PPE as noted in Appendix A.
2. Allow proper ventilation during and after application of disinfectant.
3. Check if surfaces are dirty. If dirt is present, clean with a mix of soap and water. Wipe the surface then proceed cleaning with disinfectant for the required contact time. Follow manufacturer's instructions. The surface should be visibly wet for the duration of the contact time. Wiping the product prematurely from the treated surface will reduce the product's effectiveness.
4. If the surface is not dirty, proceed with disinfectant for the required contact time. Follow manufacturer's instructions.
5. Wipe down surfaces.
6. If wiping down surfaces such as toilets, bathroom stalls, or sinks, employees may use a disposable mop to wipe surfaces and increase the distance between themselves and surfaces.

When disinfecting **soft (porous) surfaces** such as carpeted floor and drapes, employees should:

1. **Remove visible contamination** if present and clean with appropriate cleaners indicated for use on these surfaces.
2. **After cleaning,**
 - a. If the items can be laundered, launder items following manufacturer's instructions using the warmest appropriate water setting for the items and then dry completely.
 - b. Otherwise, use products EPA-approved disinfectants for use against SARS-CoV-2 that are suitable for porous surfaces. After application, follow manufacturer's instructions and contact times.

When disinfecting **electronics** such as tablets and remote controls, employees should:

1. Remove visible contamination if present.
2. Follow the manufacturer's instructions for all cleaning and disinfection products.
3. If no manufacturer guidance is available, use alcohol-based wipes with at least 70% alcohol. When not available spray disinfectant on paper towel and wipe down surface.
4. Dry surfaces thoroughly to avoid pooling of liquids.

EH&S recommends that only employees **who are experienced and have taken the required safety training to clean these spaces** be allowed to proceed with the aforementioned listed requirements and procedures.

Laundering

Per Student Housing procedures, linen will remain in vacated quarantine/isolation residences for at least 7 days. Employees should following normal laundering procedures after the 7-day period has elapsed.

Trash Removal

For employees removing household waste from residences with suspected (quarantine) or confirmed (isolation) COVID-19 infection, EH&S recommends the following:

For waste/trash located **inside** Residences:

- Student residents to review instructions listed under "Appendix C" for cleaning and waste management guidance.
- Trash bags may be removed for disposal if they are outside the room/residence.

When removing waste/trash located **outside** residences, employees should:

- Dispose of the sealed trash bag as regular trash in a dumpster.

For cleaning and disinfecting for all Residents, please review instructions listed under “Appendix D”.

Note: If the residence of an individual who has tested positive for COVID-19 has been vacated for at least 7 days, cleaning and disinfecting of the room can be performed by anyone, including the resident’s roommate who can move back into the residence.

Per Student Housing instructions, Resident(s) with positive/suspected COVID-19 are responsible for cleaning and disinfecting their assigned area(s). Please refer to “Appendix C” for cleaning and waste management considerations for Resident(s). UCI employees do not enter the residence of an individual who has tested positive for COVID-19.

Appendix A | Personal Protective Equipment (PPE) and Safety Training

The following table summarizes the required Personal Protective Equipment (PPE) and safety trainings that Student Housing employees should take before starting the job tasks listed in this guidance document.

PPE and Training Requirements for Regular Cleaning and Disinfecting Activities

	Disposable Glove	Slip Resistant Shoes/ Cover	Safety Glasses	Splash Resistant Goggles	Safety Fundamentals	Hazardous Communication	Aerosol Transmissible Diseases (ATD)	Bloodborne Pathogens (BBP)
Procedure	PPE				Relevant Training			
Cleaning* with the Following Products:								
Germicidal Ultra Bleach (contact time: 5 minute)	X	X		X	X	X	X	X
Swish Disinfectant Cleaner Aerosol (contact time: 10 minutes)	X	X		X	X	X	X	X
Cleaning and Disinfecting with the Following Products:								
730 HP Disinfectant Cleaner (contact time: 5 minutes)	X	X		X	X	X	X	X
764 Lemon Quat Disinfectant Cleaner (contact time: 10 minutes)	X	X		X	X	X	X	X
910 Finale FS No Rinse Sanitizer (contact time: 10 minutes)	X	X		X	X	X	X	X
Buckeye Terminator (contact time: 10 minutes)	X	X		X	X	X	X	X
Cell Block 64 (contact time: 10 minutes)	X	X		X	X	X	X	X
DBBC Disinfectant Bathroom and Bowl Cleaner (contact time: 10 minutes)	X	X		X	X	X	X	X
Morning Mist (contact time: 10)	X	X		X	X	X	X	X
Oxivir Tb (contact time: 1 minute)	X	X		X	X	X	X	X
Oxivir Wipes (contact time: 1 minute)	X	X		X	X	X	X	X
TB-Cide Quat (contact time: 10 minutes)	X	X		X	X	X	X	X
Virex TB (contact time: 3 minutes)	X	X		X	X	X	X	X
Other Custodial Duties (vacuuming, sweeping, dusting, etc.)	X	X	X		X	X	X	X
Trash Disposal	X	X	X		X	X	X	X

***Cleaning products are not disinfectants.**

Additional PPE and Training Requirements for Cleaning and Disinfecting Areas Visited by a Suspected/Positive COVID-19 Case

	Disposable Nitrile Glove	Slip Resistant Shoes/Cover	Safety Glasses	Splash Resistant Goggles	Safety Fundamentals	Hazardous Communication	Aerosol Transmissible Diseases (ATD)	Bloodborne Pathogens (BBP)
Procedure	PPE				Relevant Training			
Cleaning* with the Following Products:								
Germicidal Ultra Bleach (contact time: 5 minute)	X	X		X	X	X	X	X
Cleaning and Disinfecting with the Following Products:								
730 HP Disinfectant Cleaner (contact time: 5 minutes)	X	X		X	X	X	X	X
764 Lemon Quat Disinfectant Cleaner (contact time: 10 minutes)	X	X		X	X	X	X	X
910 Finale FS No Rinse Sanitizer (contact time: 10 minutes)	X	X		X	X	X	X	X
Buckeye Terminator (contact time: 10 minutes)	X	X		X	X	X	X	X
Cell Block 64 (contact time: 10 minutes)	X	X		X	X	X	X	X
Morning Mist (contact time: 10)	X	X		X	X	X	X	X
Oxivir Tb (contact time: 1 minute)	X	X		X	X	X	X	X
Oxivir Wipes (contact time: 1 minute)	X	X		X	X	X	X	X
TB-Cide Quat (contact time: 10 minutes)	X	X		X	X	X	X	X
Other Custodial Duties (vacuuming, sweeping, dusting, etc.)	X	X	X		X	X	X	X
Laundry Duties	X	X			X	X	X	X
Trash Disposal	X	X	X		X	X	X	X

Please Note: Chemical products listed are EPA-approved disinfectants for use against COVID-19: <https://www.epa.gov/pesticide-registration/list-ndisinfektantsuseagainsarscov-2>. To find a product on List N, enter the first two sets of the chemical’s EPA registration number found on the SDS or specification sheet into the search bar above the first column of List N. The number will generate the product and/or its equivalent if it is an EPA approved disinfectants for use against SARS-CoV-2.

For example, if EPA Reg. No. 12345-12 is on List N, you can buy EPA Reg. No. 12345-12-2567 and know you’re getting an equivalent product. You can find this number by looking for the EPA Reg. No. on the product label.

If you are unable to find a product on the list, look at a different product's label to confirm it has an EPA registration number and that human coronavirus is listed as a target pathogen.

Appendix A | Personal Protective Equipment (Continued)

Putting on and Removing Disposable Gloves:

When **putting on** gloves, employees should:

1. Check for holes
2. Put on gloves
3. Move hand around

When **removing** gloves, employees should:

1. Pinch glove and roll it down until the glove is completely off in a ball in the palm of the other hand.
2. Then slide a finger(s) down and inside the glove on the other hand and pull it off until it's balled around the first glove.
3. Throw gloves away immediately and wash hands with soap and water for 20 seconds.



Appendix B | Additional Resources

UCI is closely monitoring the COVID-19 situation and associated communications from the county, state and federal authorities. We will continue to provide updates through this website and email communications, and take steps to ensure the health and safety of our community. To view updates and obtain workplace posters related to COVID-19, please visit <https://uci.edu/coronavirus/>.

To view specific guidance regarding the various EH&S COVID-19, employees may also visit <https://www.ehs.uci.edu/PublicHealth/covid-19/> for more details.

Appendix C | Cleaning and Waste Management Guidance for Suspected/Positive Residents

Per Student Housing procedures, Resident(s) with positive/suspected COVID-19 are responsible for cleaning and disinfecting their assigned area(s). Resident(s) should review the following instructions regarding the cleaning of residences and disposal of waste.

General Recommendations

Resident(s) will be provided with cleaning supplies for their assigned area before entering quarantine/isolation units. These include but are not limited to:

- Trash bags
- Linen
- Disinfectant(s)
- Paper towel
- Gloves

When cleaning and disinfecting, Resident(s) should:

- Wear disposable gloves
- Avoid touching face;

After cleaning and disinfecting, Resident(s) should:

- Remove gloves and place them in trash bag;
- Trash bag can be disposed of in regular trash;
- Immediately wash hands with soap and water for 20 seconds, as soon as possible, or use alcohol-based hand sanitizer that contains at least 60% alcohol.

Cleaning

EH&S recommends that Resident(s) clean surfaces using soap and water if dirt is present. Resident(s) should also follow the manufacturer's instructions for all cleaning products regarding application method, contact time, and increase the frequency of cleaning for frequently touched surfaces to at least once a day and as needed.

Disinfecting

EH&S recommends that Resident(s) use the Student Housing provided EPA-approved disinfectants for use against COVID-19:

- Resident(s) with suspected/confirmed COVID-19 should clean and disinfect shared spaces such as bathrooms after each use.

When disinfecting **hard (non-porous)** surfaces, Resident(s) should:

1. Wear disposable gloves
2. Allow proper ventilation during and after application of disinfectant.
3. Check if surfaces are dirty. If dirt is present, clean with a mix of soap and water. Wipe the surface then proceed cleaning with disinfectant for the required contact time. Follow manufacturer's instructions. The surface should be visibly wet for the duration of the contact time. Wiping the product prematurely from the treated surface will reduce the product's effectiveness.
4. If surface is not dirty, proceed with disinfectant for the required contact time. Follow manufacturer's instructions.
5. Wipe down surfaces.
6. If wiping down surfaces such as toilets, bathroom stalls, or sinks, employees may use a disposable mop to wipe surfaces and increase the distance between themselves and surfaces.

Trash Removal

For waste/trash located **inside** Residences of quarantine/isolation units:

- Residents should:

1. Collect and double bag the waste in a trash bag
2. Seal the bag with an overhand knot
3. Spray the exterior of the bag with a disinfectant
4. Place bag **outside** the room/residence

Laundry

- If Resident(s) are washing laundry for individual(s) with suspected/confirmed COVID-19 in the same household, wash laundry thoroughly
- Wear disposable gloves while handling soiled items.
- Read and follow the directions on the labels of bedding and clothing and wash on the highest temperature setting. Dry items thoroughly using the warmest temperatures recommended on the clothing label.

Appendix D | Cleaning and Disinfecting Guidance for all Student Residents

Based on information from the Centers for Disease Control (CDC) and California Department of Public Health (CDPH), student residents should follow these recommendations for cleaning and disinfecting their residence:

- Clean all "high-touch" surfaces every day, such as counters, tabletops, doorknobs, fixtures, toilets, phones, etc. Also, clean any surfaces that may have blood, stool, or body fluids on them. Use an EPA-approved disinfectant, as provided by Student Housing, and use according to the instructions on the label, including wearing gloves and having good ventilation during use of the product.
- After cleaning and disinfecting, remove and dispose of gloves.
- Immediately clean your hands with soap and water or with hand sanitizer containing at least 60% alcohol.
- Place all used gloves and other contaminated items in a lined container before disposing of them with other household waste.
- Resident(s) should perform hand hygiene frequently. Wash hands with soap and water for at least 20 seconds or use hand sanitizer containing at least 60% alcohol.
- Resident(s) should follow respiratory etiquette: Cover coughs and sneezes with a tissue, then throw into a lined trash container.
- Resident(s) should avoid sharing personal household items, dishes, drinking glasses, cups, eating utensils, towels or bedding with other people or pets in your home. After using these items, wash hands thoroughly with soap and water.